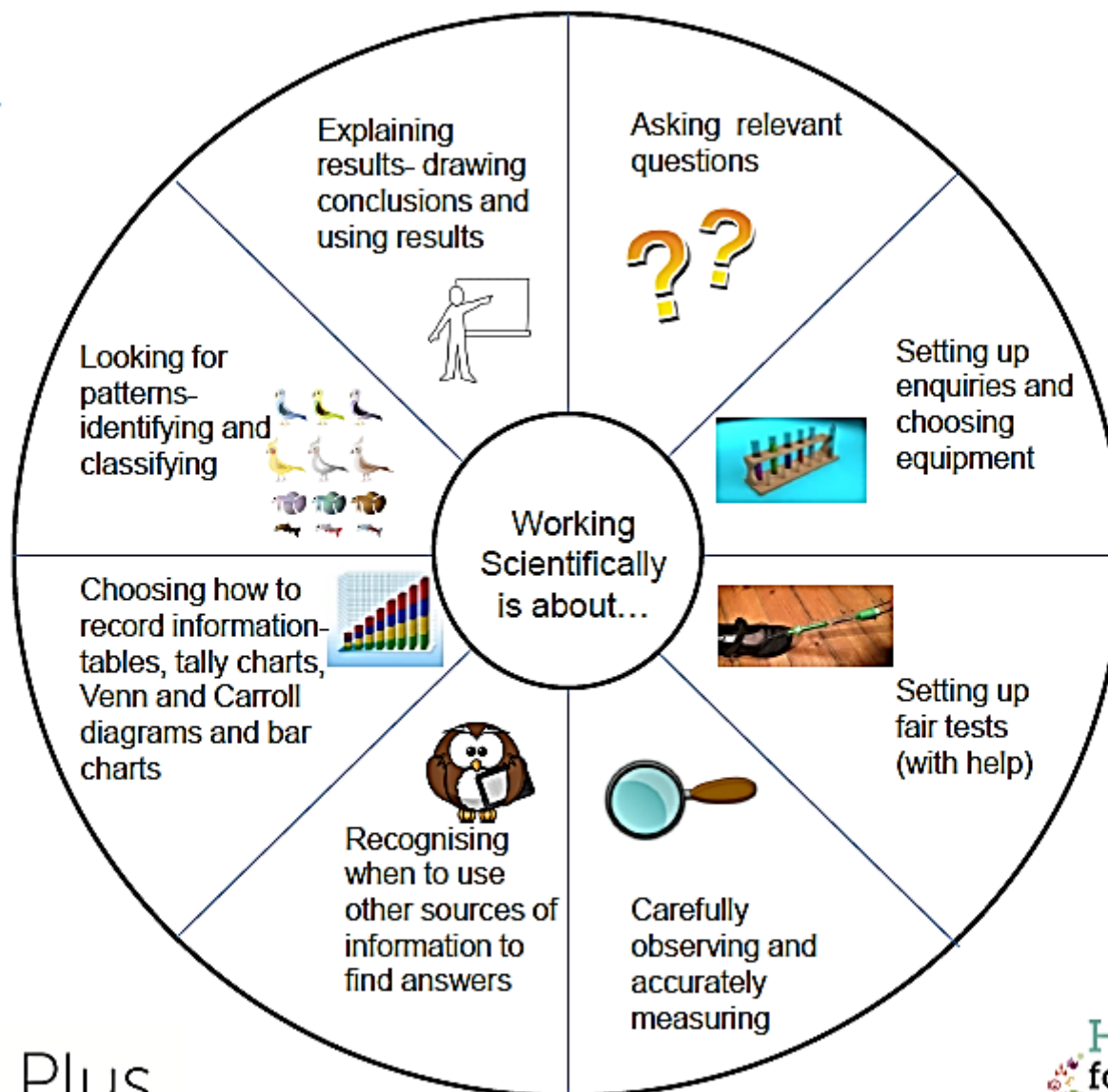


Lower
KS2



Year 3 Knowledge Organiser – Science: Plants

Key Questions/Objectives:

- What are the parts of a plant?
- How water moves through a plant?
- What does a plant need to grow?
- What are the parts of a flower?
- How can seeds be dispersed?

Helpful Information:

How Water Moves through a Plant

1. The **roots** absorb water from the soil.
2. The **stem** transports water to the **leaves**.
3. Water **evaporates** from the **leaves**.
4. This **evaporation** causes more water to be sucked up the **stem**.

The water is sucked up the **stem** like water being sucked up through a straw.

What Does a Plant Need to Grow?

Different plants vary in how much of these things they need. For example, cacti can survive in areas with little water, whereas water lilies need to live in water.

The **flower's** job is to create seeds so that new plants can be grown.

Seed Dispersal

Seeds can be dispersed by:

Water, shaking, dropping, carrying, eating, bursting,

Vocabulary:

Roots
Stem
Leaves
Flowers
Nutrients
Evaporation
Fertilisation
Petal
Stamen
Carpel (pistil)
Sepal
Pollination
Pollinator
Germination
Seed dispersal

Earth*
Natural*
Fruit*
Purpose*
Increase*
Different*
Experiment*
Important*
Extreme*

*Year
3/4
Common
Exception
Words

